

# PULLEY PARTNER EC



ECONOMY TARGET SYSTEM

BY SEIFFERT INDUSTRIAL

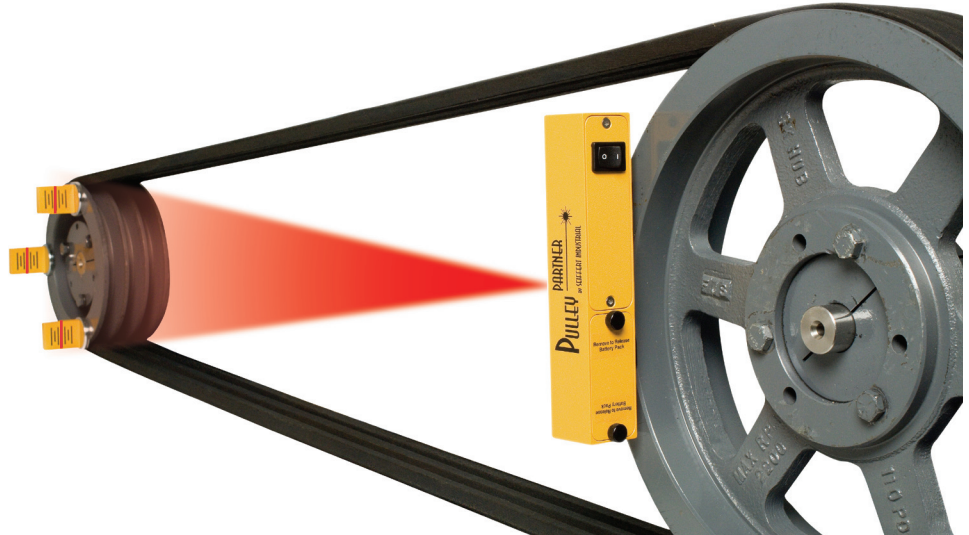
## PULLEY PARTNER EC (Economy Target System)

- Reduces vibration and belt noise
- Prolongs belt and pulley life
- Reduces down time and energy costs
- FAST and EASY
- Shows angular, parallel, and offset simultaneously
- No training required
- One-person operation
- More accurate and efficient than any other conventional method
- Uses 3-target method
- Upgradeable to more accurate reflector system

## SEIFFERT INDUSTRIAL

1323 Columbia, Suite 305  
Richardson, Texas 75081 USA

800-856-0129 Toll Free  
972-671-9465 Phone  
972-671-9468 Fax  
info@seiffertindustrial.com



**Get more out of your belt driven equipment with proper alignment using PULLEY PARTNER EC laser alignment system!**

The PULLEY PARTNER EC economy laser pulley alignment system is lightweight, compact and durable. The unit magnetically attaches to the inside or outside face of any pulley or sprocket.

The PULLEY PARTNER EC can measure spans up to 8 feet or better with ANY size pulley, large or small. A laser line is projected from the PULLEY PARTNER EC transmitter to 3 magnetic targets mounted to the opposite pulley. This laser reference line on the targets indicates the offset and vertical angle misalignment right away. This will indicate to the operator all major aspects of the pulley misalignment. This tool is so easy to use, a single operator can perform the alignment task in several minutes with no training! It comes in its own durable carrying case. This system is fully upgradeable to the much more accurate reflector system at any time. Simply purchase the model KX-2500R reflector. This addition to your system will increase your accuracy by 20 times greater versus the target system. It's your choice.

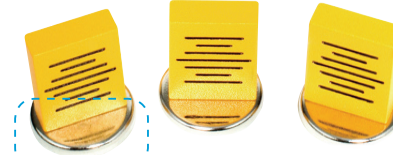
[www.seiffertindustrial.com](http://www.seiffertindustrial.com)

# TECHNICAL DATA: PULLEY PARTNER® EC / MODEL KX-2500EC SYSTEM

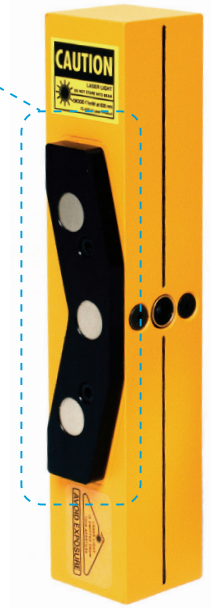
## Model KX-2500T Laser Transmitter

- Operating distance: 8 ft. or better
- Accuracy: 1/16" at 6 ft.
- Laser type: 635nm visible laser diode
- Laser power: <1mW, class 2
- Laser line length: 32" at 8 ft.
- Controls: Laser ON/OFF rocker switch
- Operating time: 25 hours continuous at 72°F
- Battery type: 2 AAA alkaline batteries
- Operating temp: 15° to 110°F
- Storage temp: -4° to 140°F
- Mounting: Magnetic
- Weight: 10.1 oz.
- Dimensions: 1.25" (W) x 1.25" (D) x 6.5" (H)
- Housing: Aluminum, powder coat finish

- Powerful magnetic brackets hold the PULLEY PARTNER firmly in place



- Magnetic mounting



## Model KX-1500 Target

- Mounting: Magnetic
- Weight: 1.4 oz.
- Dimensions: 1" (W) x 3/8" (D) x 1.5" (H)
- Housing: Aluminum, powder coat finish

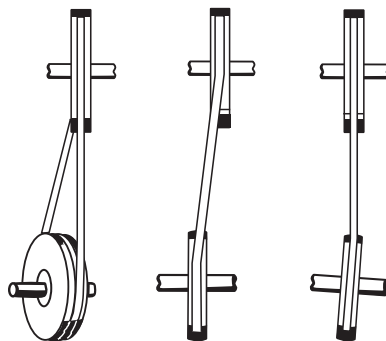
## Carrying Case

- Material: Black, high density polyethylene
- Dimensions: 10.25" (W) x 8" (D) x 3" (H)
- Insert: Die cut foam
- Weight of total package: 1.7 lbs.



Specifications subject to change without notice.

Examples of pulley misalignment

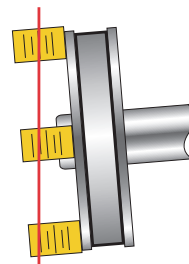


Angle/offset      Offset      Angle

Aligned



Misaligned



Aligned

